

White British	Reading			Maths			Reading			Maths			
	No pupils	L2	L3	L2+	L2	L3	L2+	L2	L3	L2+	L2	L3	L2+
1999	945	566	183	749	590	203	793	60%	19%	79%	62%	21%	84%
2000	845	440	216	656	528	200	728	52%	26%	78%	62%	24%	86%
2001	844	417	220	637	532	202	734	49%	26%	75%	63%	24%	87%
2002	722	330	201	531	420	200	620	46%	28%	74%	58%	28%	86%
2003	635	326	150	476	381	153	534	51%	24%	75%	60%	24%	84%
2004	681	385	150	535	465	131	596	57%	22%	79%	68%	19%	88%
2005	632	354	148	502	459	95	554	56%	23%	79%	73%	15%	88%
2006	665	367	162	529	457	132	589	55%	24%	80%	69%	20%	89%
2007	611	324	178	502	390	143	533	53%	29%	82%	64%	23%	87%
2008	582	353	120	473	414	98	512	61%	21%	81%	71%	17%	88%
2009	529	304	149	453	389	91	480	57%	28%	86%	74%	17%	91%
Aggregate	7691	4166	1877	5590	5025	1648	6193	54%	24%	79%	65%	21%	87%

Three year rolling average													
White British	Reading			Maths			Reading			Maths			
	No pupils	L2	L3	L2+	L2	L3	L2+	L2	L3	L2+	L2	L3	L2+
2001	2634	1423	619	2042	1650	605	2255	54%	24%	78%	63%	23%	86%
2002	2411	1187	637	1824	1480	602	2082	49%	26%	76%	61%	25%	86%
2003	2201	1073	571	1644	1333	555	1888	49%	26%	75%	61%	25%	86%
2004	2038	1041	501	1542	1266	484	1750	51%	25%	76%	62%	24%	86%
2005	1948	1065	448	1513	1305	379	1684	55%	23%	78%	67%	19%	86%
2006	1978	1106	460	1566	1381	358	1739	56%	23%	79%	70%	18%	88%
2007	1908	1045	488	1533	1306	370	1676	55%	26%	80%	68%	19%	88%
2008	1858	1044	460	1504	1261	373	1634	56%	25%	81%	68%	20%	88%
2009	1722	981	447	1428	1193	332	1525	57%	26%	83%	69%	19%	89%

All BME	Reading			Maths			Reading			Maths			
	No pupils	L2	L3	L2+	L2	L3	L2+	L2	L3	L2+	L2	L3	L2+
1999	1112	638	169	807	692	175	867	57%	15%	73%	62%	16%	78%
2000	1214	663	216	879	767	218	985	55%	18%	72%	63%	18%	81%
2001	1127	600	197	797	741	177	918	53%	17%	71%	66%	16%	81%
2002	1274	724	191	915	796	248	1044	57%	15%	72%	62%	19%	82%
2003	1255	710	213	923	768	230	998	57%	17%	74%	61%	18%	80%
2004	1210	680	193	873	819	185	1004	56%	16%	72%	68%	15%	83%
2005	1178	759	151	910	852	125	977	64%	13%	77%	72%	11%	83%
2006	1145	689	162	851	825	132	957	60%	14%	74%	72%	12%	84%
2007	1171	745	141	886	839	127	966	64%	12%	76%	72%	11%	82%
2008	1135	729	160	889	823	132	955	64%	14%	78%	73%	12%	84%
2009	1156	745	183	928	862	129	991	64%	16%	80%	75%	11%	86%
Aggregate	12977	7682	1976	8730	8784	1878	9671	59%	15%	74%	68%	14%	82%

Three year rolling average													
All BME	Reading			Maths			Reading			Maths			
	No pupils	L2	L3	L2+	L2	L3	L2+	L2	L3	L2+	L2	L3	L2+
2001	3453	1901	582	2483	2200	570	2770	55%	17%	72%	64%	17%	80%
2002	3615	1987	604	2591	2304	643	2947	55%	17%	72%	64%	18%	82%
2003	3656	2034	601	2635	2305	655	2960	56%	16%	72%	63%	18%	81%
2004	3739	2114	597	2711	2383	663	3046	57%	16%	73%	64%	18%	81%
2005	3643	2149	557	2706	2439	540	2979	59%	15%	74%	67%	15%	82%
2006	3533	2128	506	2634	2496	442	2938	60%	14%	75%	71%	13%	83%
2007	3494	2193	454	2647	2516	384	2900	63%	13%	76%	72%	11%	83%
2008	3451	2163	463	2626	2487	391	2878	63%	13%	76%	72%	11%	83%
2009	3462	2219	484	2703	2524	388	2912	64%	14%	78%	73%	11%	84%

Black African	Reading			Maths			Reading			Maths			
	No pupils	L2	L3	L2+	L2	L3	L2+	L2	L3	L2+	L2	L3	L2+
1999	239	141	39	180	157	36	193	59%	16%	75%	66%	15%	81%
2000	249	155	48	203	157	51	208	62%	19%	82%	63%	20%	84%
2001	275	158	44	202	193	22	215	57%	16%	73%	70%	8%	78%
2002	329	204	49	253	221	61	282	62%	15%	77%	67%	19%	86%
2003	270	166	36	202	171	32	203	61%	13%	75%	63%	12%	75%
2004	291	172	53	225	202	44	246	59%	18%	77%	69%	15%	85%
2005	283	193	28	221	207	22	229	68%	10%	78%	73%	8%	81%
2006	245	157	29	186	185	21	206	64%	12%	76%	76%	9%	84%
2007	256	177	21	198	192	21	213	69%	8%	77%	75%	8%	83%
2008	239	173	23	196	183	20	203	72%	10%	82%	77%	8%	85%
2009	260	174	44	218	200	28	228	67%	17%	84%	77%	11%	88%
Aggregate	2936	1870	414	2066	2068	358	2198	64%	14%	78%	70%	12%	83%

Three year rolling average													
Black African	Reading			Maths			Reading			Maths			
	No pupils	L2	L3	L2+	L2	L3	L2+	L2	L3	L2+	L2	L3	L2+
2001	763	454	131	585	507	109	616	60%	17%	77%	66%	14%	81%
2002	853	517	141	658	571	134	705	61%	17%	77%	67%	16%	83%
2003	874	528	129	657	585	115	700	60%	15%	75%	67%	13%	80%
2004	890	542	138	680	594	137	731	61%	16%	76%	67%	15%	82%
2005	844	531	117	648	580	98	678	63%	14%	77%	69%	12%	80%
2006	819	522	110	632	594	87	681	64%	13%	77%	73%	11%	83%
2007	784	527	78	605	584	64	648	67%	10%	77%	74%	8%	83%
2008	740	507	73	580	560	62	622	69%	10%	78%	76%	8%	84%
2009	755	524	88	612	575	69	644	69%	12%	81%	76%	9%	85%

Black Caribbean	Reading			Maths			Reading			Maths			
	No pupils	L2	L3	L2+	L2	L3	L2+	L2	L3	L2+	L2	L3	L2+
1999	162	99	23	122	90	27	117	61%	14%	75%	56%	17%	72%
2000	131	76	28	104	85	21	106	58%	21%	79%	65%	16%	81%
2001	136	71	35	106	87	25	112	52%	26%	78%	64%	18%	82%
2002	144	87	19	106	81	33	114	60%	13%	74%	56%	23%	79%
2003	148	82	26	108	93	25	118	55%	18%	73%	63%	17%	80%
2004	138	83	22	105	95	16	111	60%	16%	76%	69%	12%	80%
2005	142	87	25	112	113	11	124	61%	18%	79%	80%	8%	87%
2006	101	62	11	73	73	8	81	61%	11%	72%	72%	8%	80%
2007	127	81	11	92	83	9	92	64%	9%	72%	65%	7%	72%
2008	115	71	18	89	88	9	97	62%	16%	77%	77%	8%	84%
2009	113	72	14	86	80	8	88	64%	12%	76%	71%	7%	78%
Aggregate	1457	871	232	1017	968	192	1072	60%	16%	76%	66%	13%	80%

Three year rolling average													
Black Caribbean	Reading			Maths			Reading			Maths			
	No pupils	L2	L3	L2+	L2	L3	L2+	L2	L3	L2+	L2	L3	L2+
2001	429	246	86	332	262	73	335	57%	20%	77%	61%	17%	78%
2002	411	234	82	316	253	79	332	57%	20%	77%	62%	19%	81%
2003	428	240	80	320	261	83	344	56%	19%	75%	61%	19%	80%
2004	430	252	67	319	269	74	343	59%	16%	74%	63%	17%	80%
2005	428	252	73	325	301	52	353	59%	17%	76%	70%	12%	82%
2006	381	232	58	290	281	35	316	61%	15%	76%	74%	9%	83%
2007	370	230	47	277	269	28	297	62%	13%	75%	73%	8%	80%
2008	343	214	40	254	244	26	270	62%	12%	74%	71%	8%	79%
2009	355	224	43	267	251	26	277	63%	12%	75%	71%	7%	78%

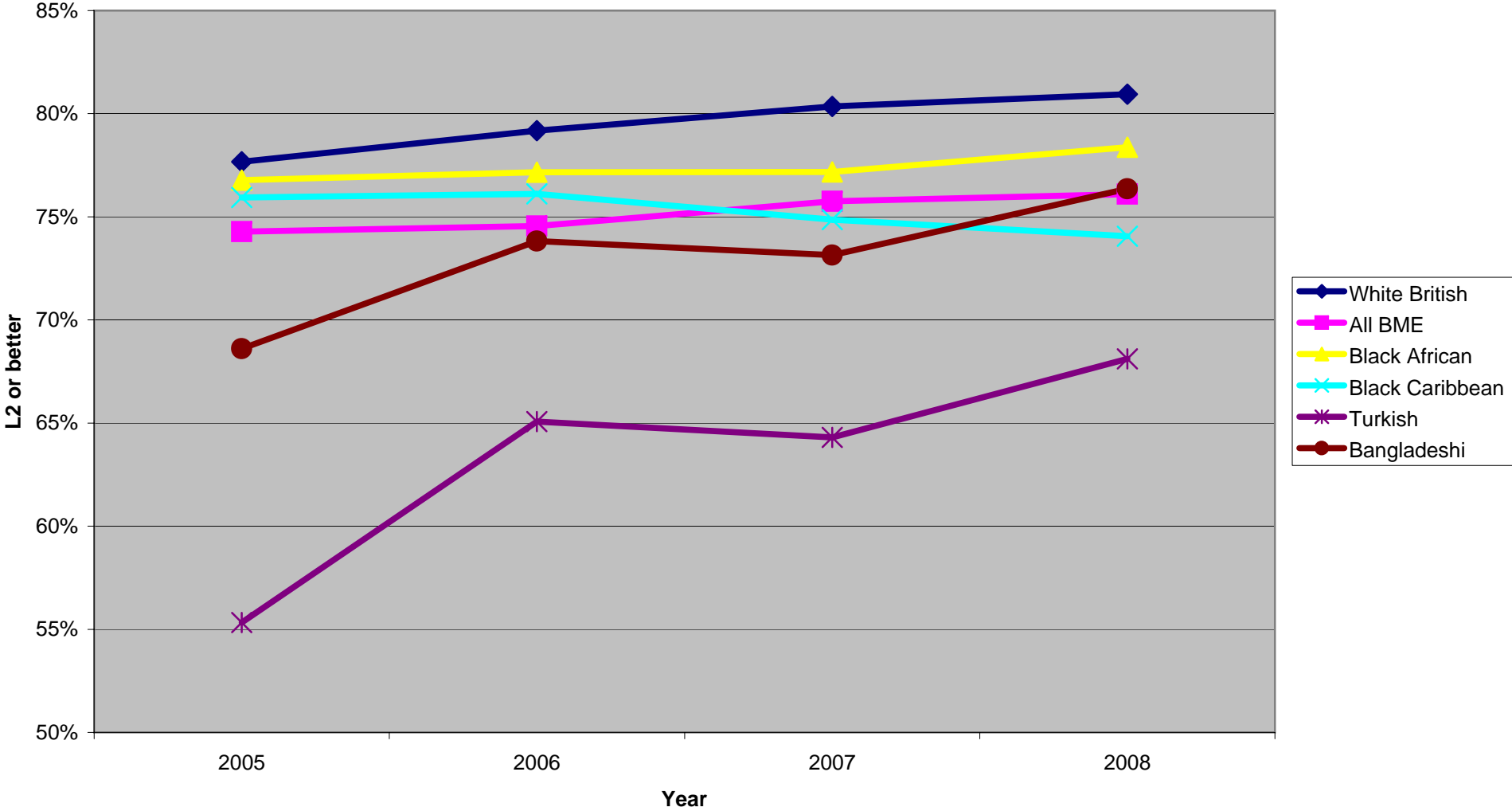
Turkish	Reading			Maths			Reading			Maths			
	No pupils	L2	L3	L2+	L2	L3	L2+	L2	L3	L2+	L2	L3	L2+
1999	135	63	10	73	74	15	89	47%	7%	54%	55%	11%	66%
2000	151	70	13	83	93	16	109	46%	9%	55%	62%	11%	72%
2001	109	42	4	46	71	4	75	39%	4%	42%	65%	4%	69%
2002	131	60	15	75	76		76	46%	11%	57%	58%	0%	58%
2003	116	62	7	69	70	13	83	53%	6%	59%	60%	11%	72%
2004	112	53	1	54	80	4	84	47%	1%	48%	71%	4%	75%
2005	88	53	4	57	57	6	63	60%	5%	65%	65%	7%	72%
2006	100	53	2	55	71	4	75	53%	2%	55%	71%	4%	75%
2007	104	74	4	78	76	9	85	71%	4%	75%	73%	9%	82%
2008	107	63	4	67	74	4	78	59%	4%	63%	69%	4%	73%
2009	112	70	5	75	78	7	85	63%	4%	67%	70%	6%	76%
Aggregate	1265	663	69	657	820	82	817	52%	5%	58%	65%	6%	71%

Three year rolling average													
Turkish	Reading			Maths			Reading			Maths			
	No pupils	L2	L3	L2+	L2	L3	L2+	L2	L3	L2+	L2	L3	L2+
2001	395	175	27	202	238	35	273	44%	7%	51%	60%	9%	69%
2002	391	172	32	204	240	20	260	44%	8%	52%	61%	5%	66%
2003	356	164	26	190	217	17	234	46%	7%	53%	61%	5%	66%
2004	359	175	23	198	226	17	243	49%	6%	55%	63%	5%	68%
2005	316	168	12	180	207	23	230	53%	4%	57%	66%	7%	73%
2006	300	159	7	166	208	14	222	53%	2%	55%	69%	5%	74%
2007	292	180	10	190	204	19	223	62%	3%	65%	70%	7%	76%
2008	311	190	10	200	221	17	238	61%	3%	64%	71%	5%	77%
2009	323	207	13	220	228	20	248	64%	4%	68%	71%	6%	77%

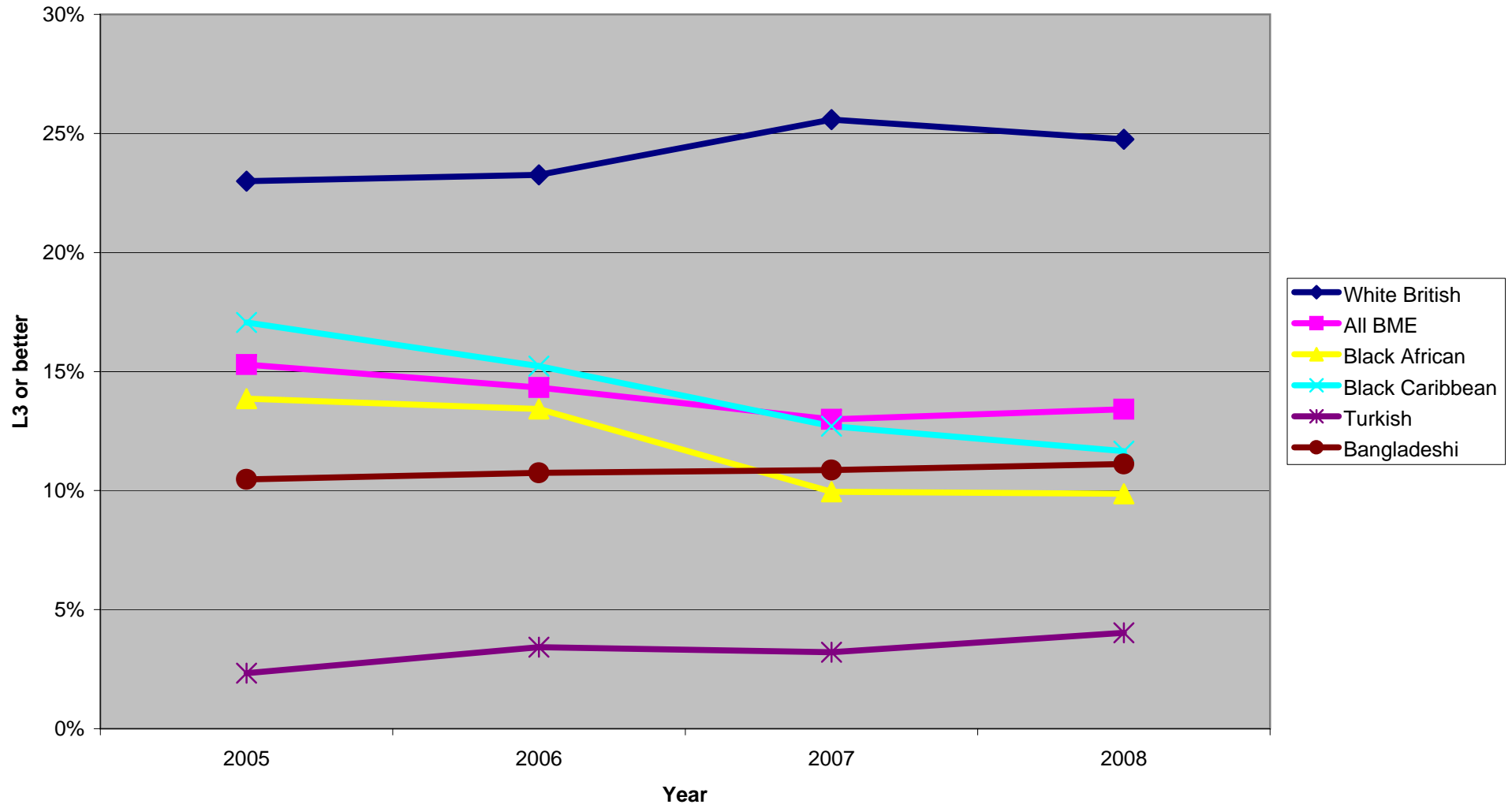
Bangladeshi	Reading			Maths			Reading			Maths			
	No pupils	L2	L3	L2+	L2	L3	L2+	L2	L3	L2+	L2	L3	L2+
1999	70	42	10	52	47	7	54	60%	14%	74%	67%	10%	77%
2000	83	36	9	45	51	10	61	43%	11%	54%	61%	12%	73%
2001	101	61	9	70	62	12	74	60%	9%	69%	61%	12%	73%
2002	89	42	8	50	51	11	62	47%	9%	56%	57%	12%	70%
2003	117	58	12	70	73	16	89	50%	10%	60%	62%	14%	76%
2004	122	74	14	88	88	15	103	61%	11%	72%	72%	12%	84%
2005	105	68	10	78	79	8	87	65%	10%	74%	75%	8%	83%
2006	136	87	15	102	98	13	111	64%	11%	75%	72%	10%	82%
2007	109	63	13	76	81	16	97	58%	12%	70%	74%	15%	89%
2008	106	79	11	90	82	9	91	75%	10%	85%	77%	8%	86%
2009	101	66	21	87	84	8	92	65%	21%	86%	83%	8%	91%
Aggregate	1139	676	132	721	796	125	829	59%	12%	71%	70%	11%	81%

Three year rolling average													
Bangladeshi	Reading			Maths			Reading			Maths			
	No pupils	L2	L3	L2+	L2	L3	L2+	L2	L3	L2+	L2	L3	L2+
2001	254	139	28	167	160	29	189	55%	11%	66%	63%	11%	74%
2002	273	139	26	165	164	33	197	51%	10%	60%	60%	12%	72%
2003	307	161	29	190	186	39	225	52%	9%	62%	61%	13%	73%
2004	328	174	34	208	212	42	254	53%	10%	63%	65%	13%	77%
2005	344	200	36	236	240	39	279	58%	10%	69%	70%	11%	81%
2006	363	229	39	268	265	36	301	63%	11%	74%	73%	10%	83%
2007	350	218	38	256	258	37	295	62%	11%	73%	74%	11%	84%
2008	351	229	39	268	261	38	299	65%	11%	76%	74%	11%	85%
2009	316	208	45	253	247	33	280	66%	14%	80%	78%	10%	89%

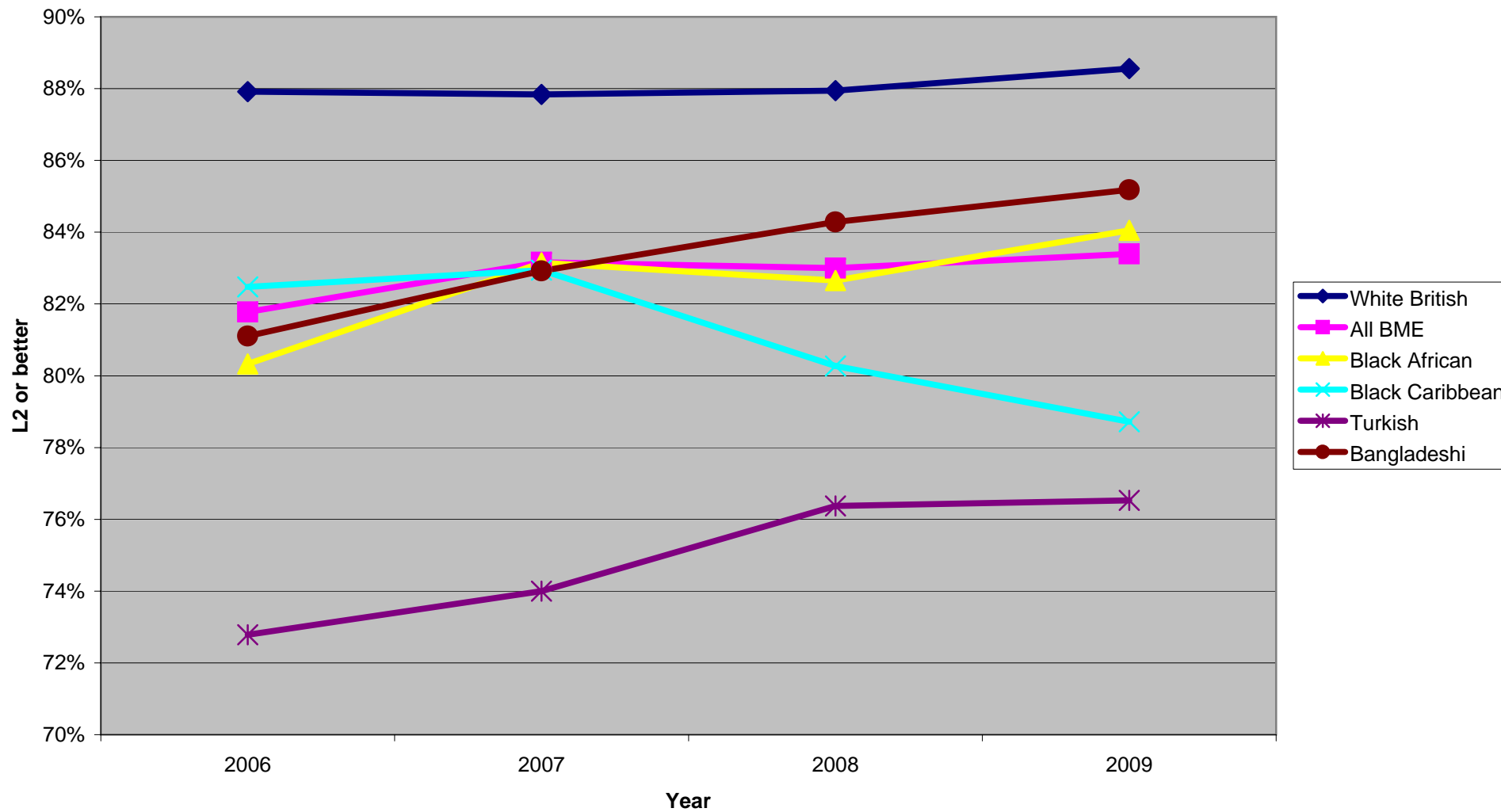
Reading 3 Year Rolling Average Level 2



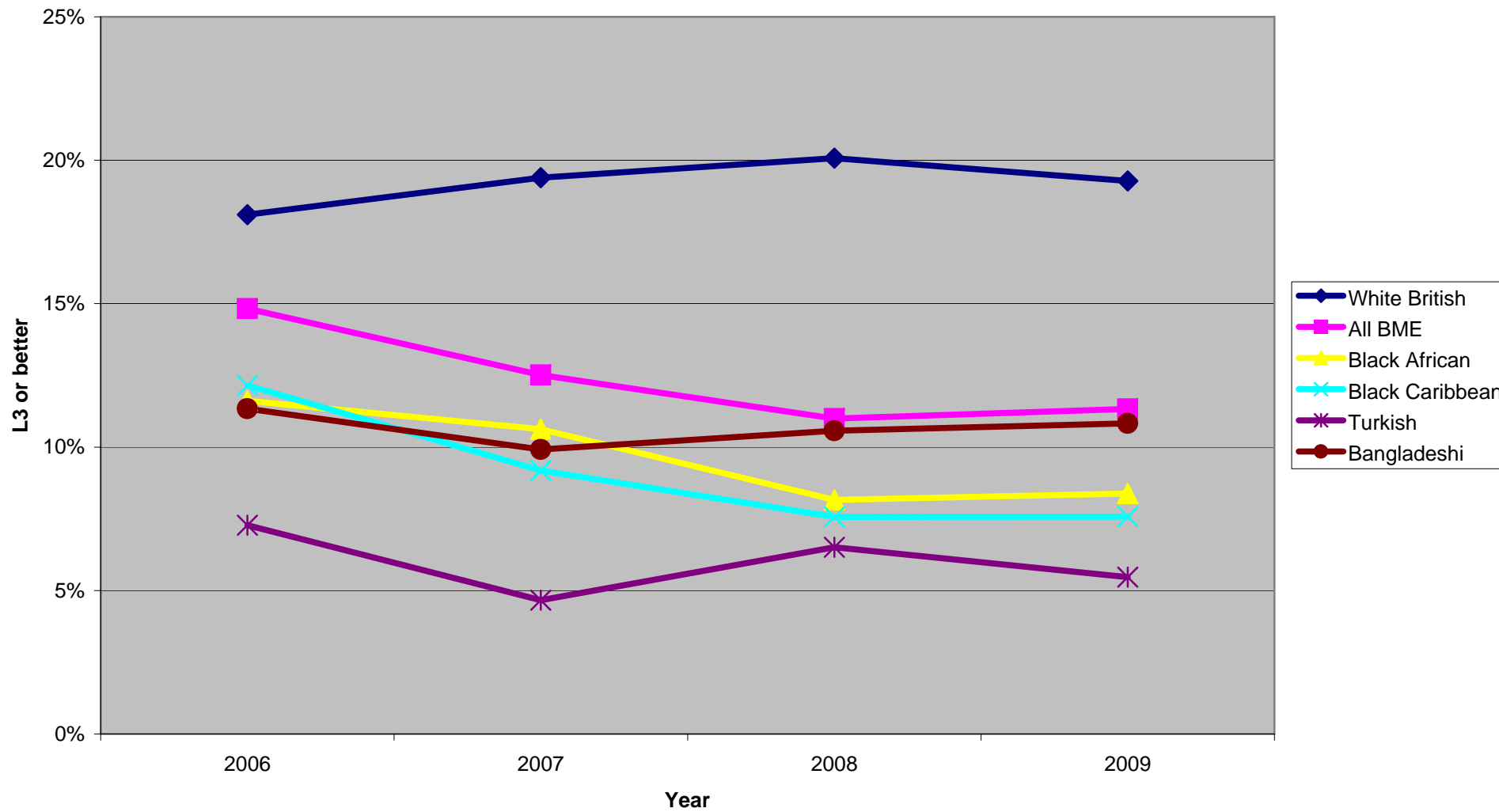
Reading 3 Year Rolling Average Level 3



Maths 3 Year Rolling Average Level 2



Maths 3 Year Rolling Average Level 3



	White	All minority ethnic	Black African	Black Caribbean	Turkish	Bangladeshi		White
1999	79%	73%	75%	75%	54%	74%	1999	19%
2000	78%	72%	82%	79%	55%	54%	2000	26%
2001	75%	71%	73%	78%	42%	69%	2001	26%
2002	74%	72%	77%	74%	57%	56%	2002	28%
2003	75%	74%	75%	73%	59%	60%	2003	24%
2004	79%	72%	77%	76%	48%	72%	2004	22%
2005	79%	77%	78%	79%	65%	74%	2005	23%
2006	80%	74%	76%	72%	55%	75%	2006	24%
2007	82%	76%	77%	72%	75%	70%	2007	29%
2008	81%	78%	82%	77%	63%	85%	2008	21%
2009	86%	80%	84%	76%	67%	86%	2009	28%
EN2+							EN3	

	White	All minority ethnic	Black African	Black Caribbean	Turkish	Bangladeshi		White
1999	84%	78%	81%	72%	66%	77%	1999	21%
2000	86%	81%	84%	81%	72%	73%	2000	24%
2001	87%	81%	78%	82%	69%	73%	2001	24%
2002	86%	82%	86%	79%	58%	70%	2002	28%
2003	84%	80%	75%	80%	72%	76%	2003	24%
2004	88%	83%	85%	80%	75%	84%	2004	19%
2005	88%	83%	81%	87%	72%	83%	2005	15%
2006	89%	84%	84%	80%	75%	82%	2006	20%
2007	87%	82%	83%	72%	82%	89%	2007	23%
2008	88%	84%	85%	84%	73%	86%	2008	17%
2009	91%	86%	88%	78%	76%	91%	2009	17%
MA2+							MA3	

	White	All minority ethnic	Black African	Black Caribbean	Turkish	Bangladeshi		White British
2001	78%	72%	77%	77%	51%	66%	2001	24%
2002	76%	72%	77%	77%	52%	60%	2002	26%
2003	75%	72%	75%	75%	53%	62%	2003	26%
2004	76%	73%	76%	74%	55%	63%	2004	25%
2005	78%	74%	77%	76%	57%	69%	2005	23%
2006	79%	75%	77%	76%	55%	74%	2006	23%
2007	80%	76%	77%	75%	65%	73%	2007	26%
2008	81%	76%	78%	74%	64%	76%	2008	25%
2009	83%	78%	81%	75%	68%	80%	2009	26%
EN2+ RA							EN3 RA	

	White	All minority ethnic	Black African	Black Caribbean	Turkish	Bangladeshi		White British
2001	86%	80%	81%	78%	69%	74%	2001	23%
2002	86%	82%	83%	81%	66%	72%	2002	25%
2003	86%	81%	80%	80%	66%	73%	2003	25%
2004	86%	81%	82%	80%	68%	77%	2004	24%
2005	86%	82%	80%	82%	73%	81%	2005	19%
2006	88%	83%	83%	83%	74%	83%	2006	18%
2007	88%	83%	83%	80%	76%	84%	2007	19%
2008	88%	83%	84%	79%	77%	85%	2008	20%
2009	89%	84%	85%	78%	77%	89%	2009	19%
MA2+ RA							MA3 RA	

White	All minority ethr	Black African	Black Ca	Turkish	Bangladeshi
0.775246773	0.719084854	0.766710354	0.7739	0.511392405	0.65748031
0.756532559	0.716735823	0.771395076	0.7689	0.52173913	0.6043956
0.746933212	0.720733042	0.751716247	0.7477	0.533707865	0.61889251
0.756624141	0.725060177	0.764044944	0.7419	0.551532033	0.63414634

All minority ethnic	Black African	Black Caribbean	Turkish	Bangladeshi						
15%	16%	14%	7%	14%	0.87972509	0.81271478	0.81271478	0.81271478	0.81271478	0.81271478
18%	19%	21%	9%	11%	0.84347826	0.78325991	0.78325991	0.78325991	0.78325991	0.78325991
17%	16%	26%	4%	9%	0.84937238	0.82008368	0.82008368	0.82008368	0.82008368	0.82008368
15%	15%	13%	11%	9%	0.72897196	0.77391304	0.77391304	0.77391304	0.77391304	0.77391304
17%	13%	18%	6%	10%	0.85849057	0.62616822	0.62616822	0.62616822	0.62616822	0.62616822
16%	18%	16%	1%	11%		0.8490566	0.8490566	0.8490566	0.8490566	0.8490566
13%	10%	18%	5%	10%						
14%	12%	11%	2%	11%						
12%	8%	9%	4%	12%						
14%	10%	16%	4%	10%						
16%	17%	12%	4%	21%						

All minority ethnic	Black African	Black Caribbean	Turkish	Bangladeshi
16%	15%	17%	11%	10%
18%	20%	16%	11%	12%
16%	8%	18%	4%	12%
19%	19%	23%	0%	12%
18%	12%	17%	11%	14%
15%	15%	12%	4%	12%
11%	8%	8%	7%	8%
12%	9%	8%	4%	10%
11%	8%	7%	9%	15%
12%	8%	8%	4%	8%
11%	11%	7%	6%	8%

All BME	Black African	Black Caribbean	Turkish	Bangladeshi
17%	17%	20%	7%	11%
17%	17%	20%	8%	10%
16%	15%	19%	7%	9%
16%	16%	16%	6%	10%
15%	14%	17%	4%	10%
14%	13%	15%	2%	11%
13%	10%	13%	3%	11%
13%	10%	12%	3%	11%
14%	12%	12%	4%	14%

All BME	Black African	Black Caribbean	Turkish	Bangladeshi
17%	14%	17%	9%	11%
18%	16%	19%	5%	12%
18%	13%	19%	5%	13%
18%	15%	17%	5%	13%
15%	12%	12%	7%	11%
13%	11%	9%	5%	10%
11%	8%	8%	7%	11%
11%	8%	8%	5%	11%
11%	9%	7%	6%	10%

White	0.775246773	0.756532559	0.7469	0.756624141
All minority ethnic	0.719084854	0.716735823	0.7207	0.725060177
Black African	0.766710354	0.771395076	0.7517	0.764044944
Black Caribbean	0.773892774	0.768856448	0.7477	0.741860465
Turkish	0.511392405	0.52173913	0.5337	0.551532033
Bangladeshi	0.657480315	0.604395604	0.6189	0.634146341